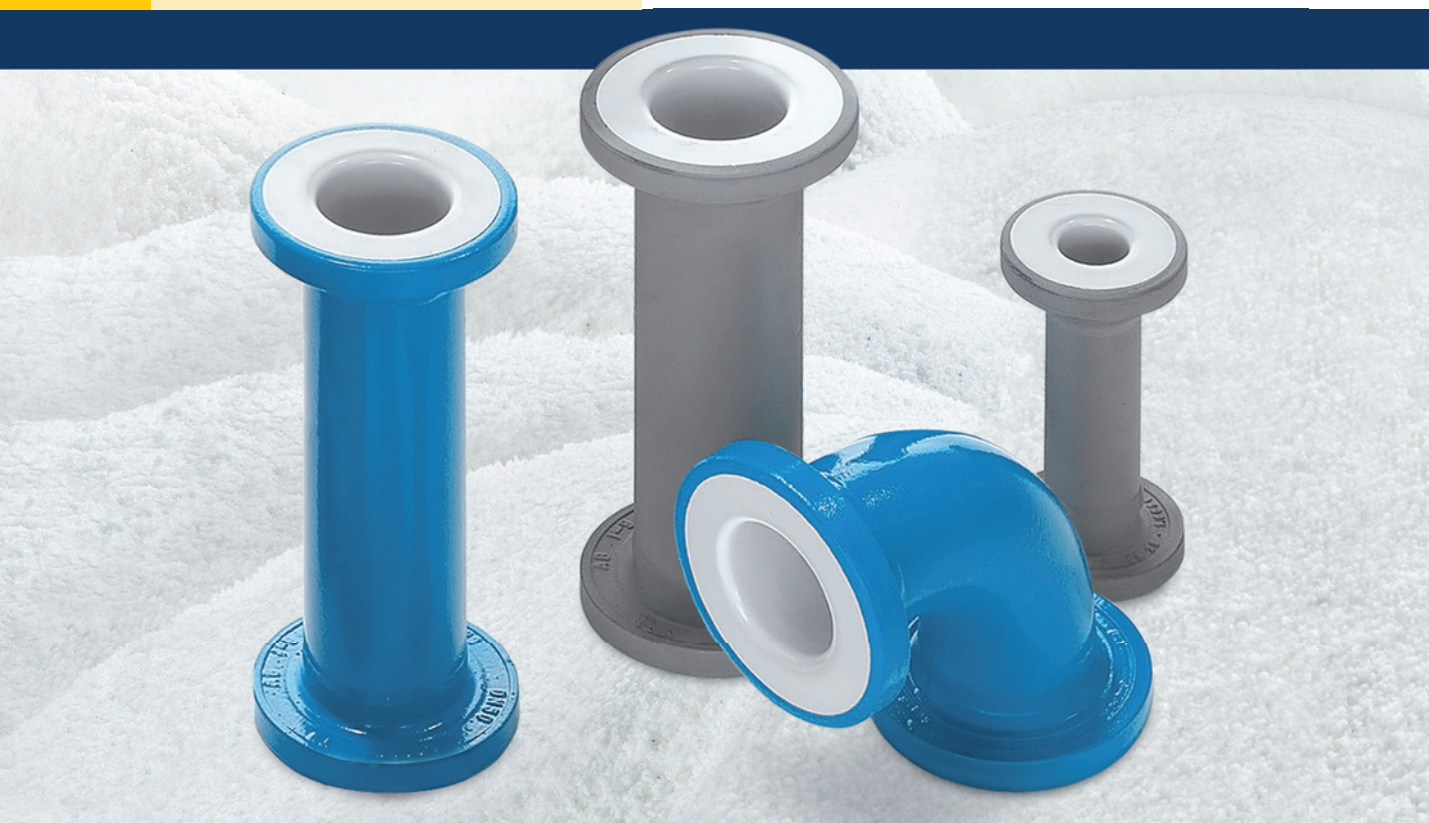


## GLASS LINING TECHNOLOGIES



## email350

The reasonable alternative – quality lining in white

email350

email850P

email800

email250*light*

# email350 – enamel quality in white

## The economical answer to plastic lining

Pipework, fittings, valves... Our standard range and customized products in email350 quality:

- colour of lining: white
- lining thickness between 0.6 and 0.8 mm
- pore free
- temperature range: -10 to 150 °C  
(higher temperatures on request)
- spark test with 10 KV
- design with stub end and loose flange
- external paint: inorganic zinc primer  
(finishing coat upon request)
- dimensions to DIN 2873

### The advantages of email350 at a glance:

- diffusion safe
- usage under full vacuum
- safety in case of fire
- abrasion resistant
- anti-adhesive
- highly resistant



Pipeline components designed to customer requirements...

... are a further specialty in the **Glass Lining Technologies** range of products. Customized versions or special lengths are possible. For distributors – also called collectors – we offer certain standard versions.

### Quality and safety

Certified quality ensures safety. Extensive internal tests in accordance with DIN-ISO, ASME, factory standards and specific company stipulations ensure optimal certified safety. The easy cleaning of our enamel products is evidenced by QHD certification.

Please ask for our special produced pipe parts and for further information. You can also find more details on our homepage [www.dueker.de](http://www.dueker.de)

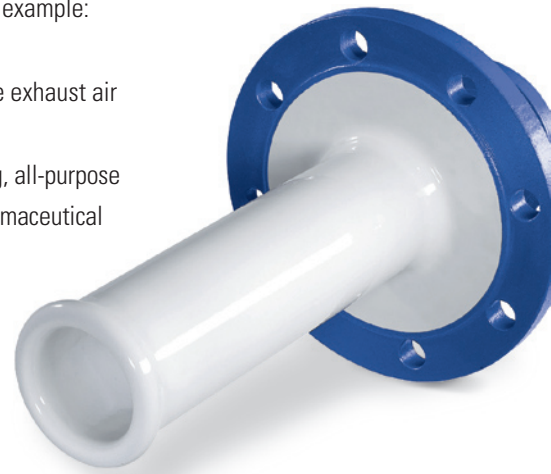
### Additional glass lining qualities

**Düker Glass Lining Technologies** offers in addition to **email350** glass linings which are different with regard to technical specifications, lining thickness or other application criteria. For example:

**email250/light** piping for aggressive exhaust air or water

**email800** dark blue glass lining, all-purpose in chemical and pharmaceutical industry

**email850P** light blue glass lining for the pharmaceutical industry



Dip Pipes or distributors with **email350** to customers requirements



GLASS LINING TECHNOLOGIES

JOBGING FOUNDRY

FITTINGS AND VALVES

DRAINAGE TECHNOLOGY

ENGINEERING

Düker GmbH & Co. KGaA

Hauptstraße 39-41  
D-63846 Laufach

Phone +49 6093 87-260  
Fax +49 6093 87-303

Web: [www.dueker.de](http://www.dueker.de)  
E-Mail: [info@dueker.de](mailto:info@dueker.de)